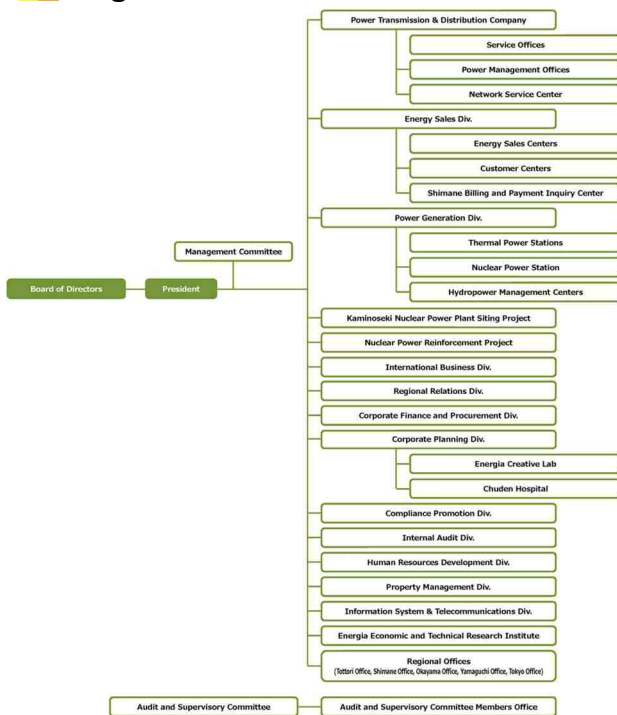


# Corporate Information

## Organization Chart (As of April 1, 2019)



## Board Members / Management (As of June 26, 2019)

◆ Board Members		◆ Main Executive Officers	
<b>Representative Director Chairperson of the Board</b>	Tomohide Karita	<b>President &amp; Chief Executive Officer</b>	Mareshige Shimizu
<b>Representative Directors</b>	Mareshige Shimizu	<b>Vice President &amp; Senior Managing Executive Officers</b>	Moriyoshi Ogawa
	Moriyoshi Ogawa		Masaki Hirano
	Masaki Hirano		Hideo Matsuoka
	Hideo Matsuoka	<b>Managing Executive Officers</b>	Akimasa Iwasaki
Akimasa Iwasaki	Shigeru Ashitani		
Shigeru Ashitani	Takafumi Shigeto		
Takafumi Shigeto	Natsuhiko Takimoto		
Natsuhiko Takimoto	Masahiro Yamashita		
Masahiro Yamashita	Hisashi Kanda		
Hisashi Kanda	Tatsuo Kitano		
Hiroshi Segawa	Norimasa Tamura		
Hiroaki Tamura	Toshio Takaba		
Kunio Uchiyamada	Toru Fukushima		
Etsuko Nosohara	Tsukasa Hayashi		
	Seishi Okada		
	Toru Funaki		

## Corporate Governance

To enable quick, resolute decision-making, further improve management transparency and fairness, and strengthen supervisory functions, we adopt a system of company with audit and supervisory committee and have three external Directors.

We continue striving to enhance and strengthen corporate governance to establish trust of our stakeholders such as our stockholders and investors, our customers, local communities and our business partners.

## ◆ Corporate Structure and Internal Controls (As of July 2019)

