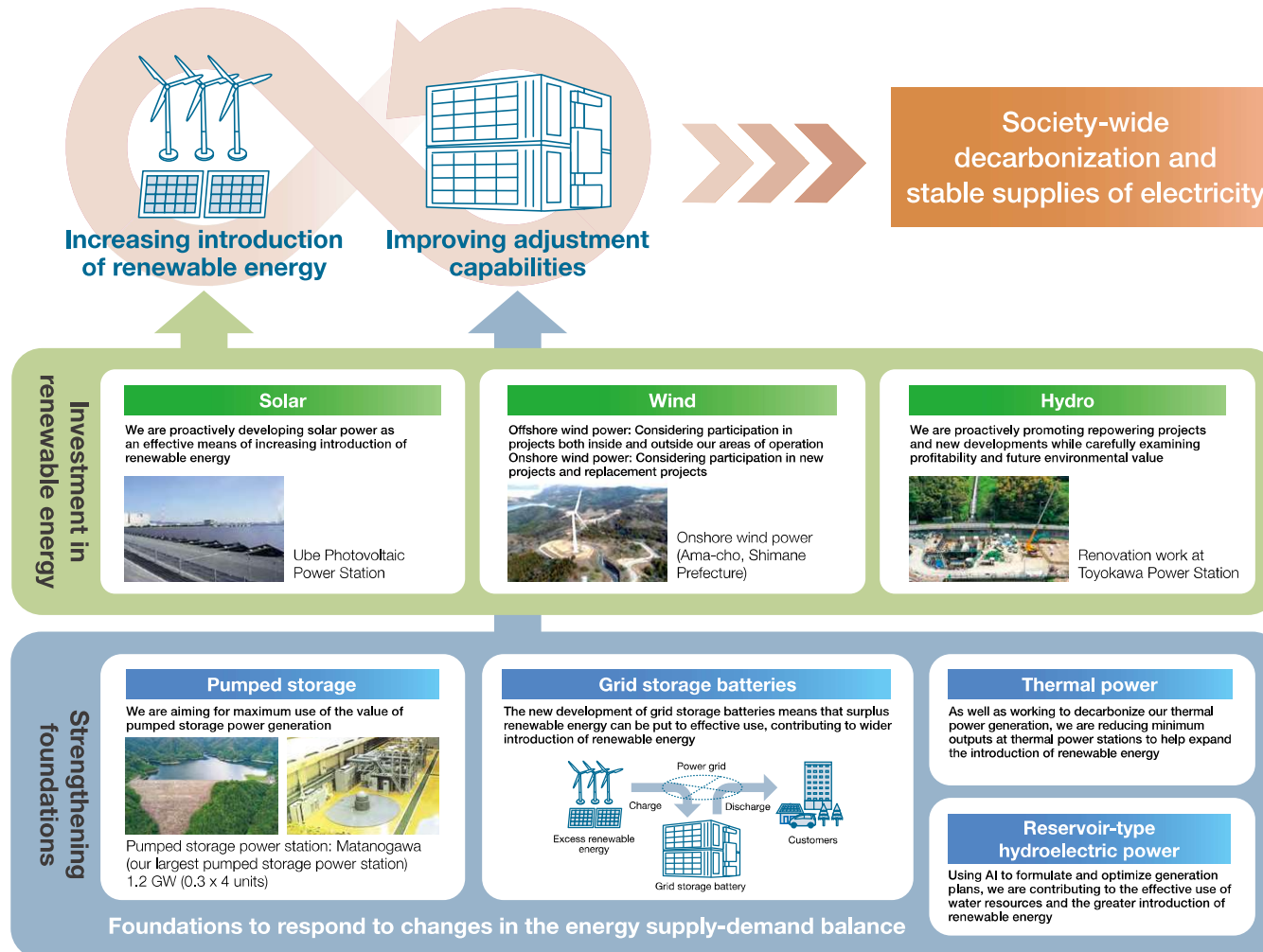


## Power Generation Business

### Further Introduction of Renewable Energy

In line with the expansion of renewable energy, adjustment capabilities using pumped storage plants, grid storage batteries, thermal power, and other sources are growing in importance. We will therefore work to both expand introduction of renewable energy and improve our adjustment capabilities.



### Renewable energy initiatives

From the twin perspectives of improving energy self-sufficiency and lessening environmental impact, we are working proactively to further expand the introduction of solar and wind power and increase output for existing hydropower to achieve carbon neutrality by 2050. Looking ahead, we will proactively seek to develop offshore wind power—which we believe has particular potential for growth—and continue to maximize introduction of renewable energy.

#### Introduction of renewable energy since FY 3/2021 (Japan)

<b>Hydro</b>	<ul style="list-style-type: none"> <li>Repowering of existing hydroelectric power Enacted: [Kitahara: March 2024; and 5 other power plants] To be enacted: [Toyokawa: March 2026; and 7 other power plants]</li> </ul>
<b>Solar</b>	<ul style="list-style-type: none"> <li>On-site and offsite solar power stations</li> </ul>
<b>Wind</b>	<ul style="list-style-type: none"> <li>Kitakyushu Hibikinada Offshore Wind Farm [Began participating in November 2024, start to operations in April 2025]</li> </ul>
<b>Biomass</b>	<ul style="list-style-type: none"> <li>Mixed-fuel generation with woody biomass [Shin-Onoda Units 1 and 2: Expansion of mixed-fuel combustion from August 2020 onward] [Misumi Unit 2: November 2022]</li> <li>Biomass power generation business [Kaita Biomass Power Co., Ltd.: April 2021, expansion of mixed-fuel combustion from April 2024] [ENERGIA POWER YAMAGUCHI CORPORATION: Expansion of mixed-fuel combustion from September 2021 onward]</li> </ul>

#### Initiatives to develop floating offshore wind power

The San'in coast of the Chugoku region has many deep waters, holding great potential for developing floating offshore wind turbines. In order to improve our technical abilities to develop floating offshore wind power generation, we joined the Floating Offshore Wind Technology Research Association (FLOWRA) in June 2024. In November 2024, with the goal of gaining expertise related to running floating offshore wind operations, and to tie this in to our own future development, we became an investment partner in Kitakyushu Hibikinada Offshore Wind Farm, which began commercial operation in April 2025.



Kitakyushu Hibikinada Offshore Wind Farm	
<b>Location</b>	Offshore at Hibikinada, Kitakyushu City, Fukuoka Pref.
<b>Output</b>	3,000 kW
<b>Commercial operation start</b>	April 22, 2025