

Financial/Non-financial (ESG) Data

Main Financial Data

■ Consolidated

	Units	FY 3/2021	FY 3/2022	FY 3/2023	FY 3/2024	FY 3/2025
Sales (operating revenues)	¥1 million	1,307,498	1,136,646	1,694,602	1,628,785	1,529,218
Operating income	¥1 million	34,283	(60,744)	(68,892)	206,777	129,148
Ordinary income	¥1 million	30,092	(61,879)	(106,780)	194,076	128,543
Net income attributable to owners of parent	¥1 million	14,564	(39,705)	(155,378)	133,501	98,474
Shareholders' equity	¥1 million	657,194	605,777	447,487	604,874	707,535
Total assets	¥1 million	3,385,169	3,566,947	4,040,048	4,133,265	4,360,959
Free cash flows	¥1 million	(62,533)	(206,077)	(287,720)	69,370	(172,817)
Cash flow from operating activities	¥1 million	110,228	310	(62,696)	271,393	186,022
Cash flow from investing activities	¥1 million	(172,762)	(206,387)	(225,024)	(202,022)	(358,839)
Cash flow from financing activities	¥1 million	75,241	212,581	464,958	(17,126)	161,182
Ratio of ordinary income to sales	%	2.3	(5.4)	(6.3)	11.9	8.4
Capital investment	¥1 million	190,617	184,213	208,157	229,234	340,511
Depreciation	¥1 million	83,418	79,621	92,584	106,488	114,837
Number of employees	People	13,050	12,949	12,885	12,776	12,526

■ Non-consolidated

	Units	FY 3/2021	FY 3/2022	FY 3/2023	FY 3/2024	FY 3/2025
Sales (operating revenues)	¥1 million	1,147,753	994,992	1,502,494	1,448,151	1,342,283
Operating income	¥1 million	(12,711)	(89,693)	(96,853)	135,822	83,975
Ordinary income	¥1 million	(10,968)	(75,889)	(98,413)	145,625	95,280
Net income	¥1 million	(5,300)	(46,336)	(153,523)	112,069	82,944
Paid-in capital	¥1 million	197,024	197,024	197,024	197,024	197,024
Number of shares issued	Shares	387,154,692	387,154,692	387,154,692	387,154,692	387,154,692
Shareholders' equity	¥1 million	474,178	408,437	243,107	361,844	430,364
Total assets	¥1 million	3,094,988	3,263,400	3,703,393	3,784,085	3,961,765
Ratio of ordinary income to sales	%	(1.0)	(7.6)	(6.5)	10.1	7.1
Capital investment	¥1 million	116,949	110,547	133,550	147,883	249,741
Depreciation	¥1 million	29,263	30,245	40,075	50,605	59,529

Note 1: The number of employees excludes loan employees and those on administrative leave.

Note 2: We applied the "Accounting Standard for Revenue Recognition" and the "Regulation on Accounting at Electric Utilities" which was revised in accordance with this standard from April 1, 2021.

Note 3: Depreciation for Chugoku Electric Power (non-consolidated) does not include non-business expenses.

Financial/Non-financial (ESG) Data

Main Financial Data

■ Consolidated

	Units	FY 3/2021	FY 3/2022	FY 3/2023	FY 3/2024	FY 3/2025
Interest-bearing debt	¥1 million	2,291,881	2,527,706	3,022,051	3,004,209	3,181,311
Shareholders' equity ratio	%	19.4	17.0	11.1	14.6	16.2
Return on equity (ROE)	%	2.2	(6.3)	(29.5)	25.4	15.0
Return on invested capital (ROIC) [Capital cost]	%	1.2 [1.1]	(1.2) [0.8]	(1.7) [0.7]	4.4 [1.3]	3.0 [1.4]
Ordinary income to total assets ratio (ROA)	%	0.9	(1.8)	(2.8)	4.7	3.0
Book-value per share (BPS)	Yen	1,824.17	1,681.51	1,242.16	1,679.11	1,967.75
Earnings per share (EPS)	Yen	40.42	(110.21)	(431.30)	370.59	273.70
Price book-value ratio (PBR)	Multiple	0.7	0.5	0.5	0.7	0.4
Price earnings ratio (PER)	Multiple	33.6	—	—	3.1	3.1
EBITDA	¥1 million	117,701	18,877	23,692	313,265	243,985
Debt equity ratio (D/E ratio)	Multiple	3.5	4.2	6.8	5.0	4.5
Payout ratio	%	123.7	—	—	9.4	9.9

Note 1: · Invested capital for ROIC has been calculated based on averages at the beginning and end of the period.

· The profit used for ROIC calculation is business profit (after tax), which is operating profit plus dividend income, etc.

Note 2: · Capital cost is estimated based on CAPM.

· Beta value up until FY 3/2023 is over five years, beta value for FY 3/2024 and after is for one year (FY 3/2024: 0.96; FY 3/2025: 0.81).

· The market risk premium is 6.5%.

■ Non-consolidated

	Units	FY 3/2021	FY 3/2022	FY 3/2023	FY 3/2024	FY 3/2025
Interest-bearing debt	¥1 million	2,298,919	2,528,445	3,008,234	3,020,247	3,193,568
Shareholders' equity ratio	%	15.3	12.5	6.6	9.6	10.9
Return on equity (ROE)	%	(1.1)	(10.5)	(47.1)	37.1	20.9
Ordinary income to total assets ratio (ROA)	%	(0.4)	(2.4)	(2.8)	3.9	2.5
Dividends per share	Yen	50	40	0	35	27
Book-value per share (BPS)	Yen	1,315.21	1,132.90	674.33	1,003.72	1,196.00
Earnings per share (EPS)	Yen	(14.70)	(128.52)	(425.84)	310.86	230.36
Price book-value ratio (PBR)	Multiple	1.0	0.7	1.0	1.2	0.7
Price earnings ratio (PER)	Multiple	—	—	—	3.7	3.7
EBITDA	¥1 million	16,552	(59,448)	(56,778)	186,427	143,504
Debt equity ratio (D/E ratio)	Multiple	4.8	6.2	12.4	8.3	7.4
Payout ratio	%	—	—	—	11.3	11.7
Dividend yield	%	3.7	4.7	—	3.0	3.1

Note 1: The price book-value ratio (PBR), price earnings ratio (PER), and dividend yield are calculated using the stock price at the end of the fiscal year.

Note 2: EBITDA is calculated by adding depreciation to operating income.

Financial/Non-financial (ESG) Data

Key Data (Sales, Generated & Received Electricity, and Power Transmission and Distribution)

■ Electricity sales results (Chugoku Electric)

			Units	FY 3/2021	FY 3/2022	FY 3/2023	FY 3/2024	FY 3/2025
Total electricity sales	Retail sales	Lighting	1 million kWh	16,822	16,444	15,507	15,048	15,529
		Power	1 million kWh	29,568	30,663	29,821	29,557	26,192
	Total		1 million kWh	46,391	47,106	45,328	44,605	41,721
	Sales to other power companies		1 million kWh	7,166	9,323	9,275	8,018	10,024
	Total		1 million kWh	53,557	56,429	54,603	52,623	51,745

Note: Electricity sales are for Chugoku Electric.

■ Power generated and received (Chugoku Electric)

			Units	FY 3/2021	FY 3/2022	FY 3/2023	FY 3/2024	FY 3/2025
Generated and received electricity	Own facilities	Hydroelectric	1 million kWh	3,485	3,515	3,086	3,379	3,592
		Thermal	1 million kWh	28,059	29,775	30,401	28,249	24,947
		Nuclear	1 million kWh	—	—	—	—	1,980
		New energy sources	1 million kWh	8	9	16	49	109
	Power purchased		1 million kWh	27,707	28,849	26,372	26,493	26,486
	Used for pumping		1 million kWh	(1,177)	(1,163)	(1,392)	(1,153)	(1,385)
	Total		1 million kWh	58,082	60,985	58,483	57,018	55,729
Water flow rate			%	96.6	96.7	76.1	93.6	101.1
Thermal efficiency (generator output, higher heating value standard)			%	41.4	41.3	41.4	41.5	41.9
Utilization rate of nuclear power facilities			%	—	—	—	—	27.6

Note: Power generated and received are for Chugoku Electric.

■ Own power generation facilities (Chugoku Electric)

	Units	FY 3/2021	FY 3/2022	FY 3/2023	FY 3/2024	FY 3/2025
Hydroelectric	1 MW	2,905	2,906	2,907	2,910	2,910
Thermal	1 MW	6,915	7,054	7,354	6,623	6,623
Nuclear	1 MW	820	820	820	820	820
New energy sources	1 MW	6	6	6	6	6
Total	1 MW	10,646	10,786	11,087	10,359	10,359

Note: Facility capacities for Chugoku Electric are indicated for the end of the fiscal year.

■ Power transmission and distribution loss rate (Chugoku Electric Power Transmission & Distribution)

	Units	FY 3/2021	FY 3/2022	FY 3/2023	FY 3/2024	FY 3/2025
Low voltage	%	8.4	7.4	7.3	8.0	7.7
High voltage	%	4.8	4.5	4.0	4.8	4.4
Extra-high voltage	%	2.7	2.7	2.1	2.7	2.5

Note: Rates for FY 3/2024 and FY 3/2025 are those applied to the respective fiscal years in our agreements on consignment supplies, etc.

Financial/Non-financial (ESG) Data

Non-financial (ESG) Data

■ Environment

		FY 3/2023	FY 3/2024	FY 3/2025	
Promotion of global warming countermeasures					
Note: Figures are for Chugoku Electric					
CO ₂ emission factor*1 (adjusted*2)		0.544kg-CO ₂ /kWh	0.511kg-CO ₂ /kWh	0.472kg-CO ₂ /kWh	
CO ₂ emissions (adjusted*2)		24.66 million t-CO ₂	22.77 million t-CO ₂	19.69 million t-CO ₂	
Note: Figures are the combined total for Chugoku Electric and Chugoku Electric Power Transmission & Distribution					
Supply chain greenhouse gas emissions	Scope 1*3	19.61 million t-CO ₂	18.05 million t-CO ₂	15.83 million t-CO ₂	
	Scope 2*4	Offices	40 t-CO ₂	30 t-CO ₂	20 t-CO ₂
		Power transmission and distribution loss	–	–	0.63 million t-CO ₂
	Scope 3*5	Category 1	1.82 million t-CO ₂	1.52 million t-CO ₂	1.74 million t-CO ₂
		Category 2	0.64 million t-CO ₂	0.71 million t-CO ₂	1.08 million t-CO ₂
		Category 3	8.30 million t-CO ₂	9.09 million t-CO ₂	6.96 million t-CO ₂
		Category 5	0.04 million t-CO ₂	0.03 million t-CO ₂	0.03 million t-CO ₂
		Category 6	0.001 million t-CO ₂	0.001 million t-CO ₂	0.001 million t-CO ₂
		Category 7	0.002 million t-CO ₂	0.002 million t-CO ₂	0.003 million t-CO ₂
		Category 11	2.20 million t-CO ₂	1.92 million t-CO ₂	2.02 million t-CO ₂
SF ₆ emissions		1.5 t	1.5 t	1.7 t	
SF ₆ recovery rate	At checking	99.7%	99.7%	99.3%	
	At disposal	99.4%	99.4%	99.4%	
Note: Figures are for the whole Chugoku Electric Power Group					
Emissions of specified chlorofluorocarbon, etc.		0.6 t	0.8 t	1.3 t	
Promotion of the formation of a recycling-oriented society					
Note: Figures are for the whole Chugoku Electric Power Group					
Waste*6 generated		983 thousand t	887 thousand t	873 thousand t	
Coal ash generated		704 thousand t	612 thousand t	660 thousand t	
Waste*6 recycling rate		97.7%	95.4%	95.2%	
Coal ash recycling rate		98.9%	95.3%	95.7%	
Promotion of local environmental conservation					
Note: Figures are for Chugoku Electric					
SOx emission intensity		0.09g/kWh	0.12g/kWh	0.10g/kWh	
NOx emission intensity		0.20g/kWh	0.18g/kWh	0.14g/kWh	

*1 CO₂ emission factor for FY 3/2025 is a provisional value, and the official value will be announced by the government.

*2 Reflects adjustments relating to feed-in-tariffs (FIT) and deductions from CO₂ emissions credits based on the Act on Promotion of Global Warming Countermeasures, etc.

*3 Direct emissions of greenhouse gases by the business operator (consumption of fuel for power generation, use of vehicle fuel, and emissions of CH₄ and other gases which must be reported under the Act on Promotion of Global Warming Countermeasures).

*4 Indirect emissions due to use of electricity supplied from other companies. For FY 3/2025 onward, emissions from power transmission and distribution loss have been moved from Scope 3 Category 3 to Scope 2.

*5 Indirect emissions other than Scope 2. The applicable scope of each category is as follows:

- Category 1: Emissions from the resource extraction stage to the manufacturing stage for products and services purchased or acquired by the company
- Category 2: Emissions from construction, manufacturing, and transport of capital goods purchased or acquired
- Category 3: Upstream emissions of purchased fuel (resource extraction, production, and transport), and upstream manufacturing process emissions of purchased electricity (resource extraction, production, and transport)
- Category 5: Emissions relating to disposal and treatment outside the company of wastes (excluding valuable wastes) generated due to the company's business activities
- Category 6: Emissions due to fuel/electricity consumption in transportation used by employees for traveling during work
- Category 7: Emissions due to fuel/electricity consumption in transportation used by employees for commuting
- Category 11: Emissions from use of sold products (coal and gas)

*6 Wastes also includes valuables.

For environmental data other than that on this page,
please see the Chugoku Electric Power Group
Environmental Data.

 Chugoku Electric Power Group Environmental Data
<https://www.energia.co.jp/energy/energia/kaiji/index.html>

Financial/Non-financial (ESG) Data

■ Personnel

Main employee data (Chugoku Electric)

Note: As of the end of fiscal year

	FY 3/2023	FY 3/2024	FY 3/2025
No. of employees	4,564	4,451	4,382
Male	3,532	3,416	3,336
Female	1,032	1,035	1,046
No. of management positions	2,188	2,166	2,141
Male	1,969	1,929	1,885
Female	219	237	256
No. hired	139	158	170
Male	86	93	116
Female	53	65	54
Average age	42.6	42.5	42.2
Male	43.4	43.3	43.0
Female	39.8	39.7	39.8
Average years of service	21.5	21.2	20.8
Male	22.7	22.5	22.0
Female	17.3	17.0	17.0

Main employee data (Chugoku Electric Power Transmission & Distribution)

Note: As of the end of fiscal year

	FY 3/2023	FY 3/2024	FY 3/2025
No. of employees	3,625	3,528	3,490
Male	3,589	3,489	3,445
Female	36	39	45
No. of management positions	1,855	1,790	1,779
Male	1,852	1,787	1,773
Female	3	3	6
No. hired	106	122	121
Male	102	117	114
Female	4	5	7
Average age	43.5	43.0	42.7
Male	43.7	43.1	42.8
Female	29.1	29.1	28.9
Average years of service	23.9	23.3	22.9
Male	24.1	23.4	23.1
Female	7.6	7.8	7.7

Financial/Non-financial (ESG) Data

■ Personnel Continued

Personnel management indicators

			FY 3/2023	FY 3/2024	FY 3/2025	
Promotion of active roles for diverse personnel <small>Note: Unless otherwise specified, figures are for Chugoku Electric.</small>						
Further promotion of autonomy and diversity	No. of female general managers* ¹		1	1	1	
	Ratio of female general managers* ¹		1.9%	1.9%	1.9%	
	No. of female section chiefs or higher		17	19	21	
	Ratio of female in positions of section chief or higher		3.4%	3.8%	4.2%	
	No. of female assistant managers or higher		219	237	256	
	Ratio of female assistant managers or higher		10.0%	10.9%	12.0%	
	No. of female engineers		55	63	65	
	Childcare leave/acquisition	Female	Acquisition rate* ²	95.0%	121.0%	107.0%
			No.	46	51	44
		Male	Acquisition rate* ²	40.0%	52.0%	70.0%
			No.	53	55	67
	Average no. of days		74 days	52 days	66 days	
	No. of users of nursing care leave		4	2	1	
	Wage difference between men and women		69.8%	70.7%	70.9%	
	Regular workers		70.6%	71.4%	71.7%	
	Non-regular workers		48.1%	51.8%	49.7%	
	Total hours worked (per person)		1,902.0 hours	1,905.2 hours	1,906.4 hours	
Annual paid leave taken (per person)		17.8 days	17.9 days	17.6 days		
No. of cases of using life support leave		1,333	951	951		
Hiring rate of persons with disabilities* ³		2.61%	2.64%	2.81%		
Improvement of relationships between individuals and organizations	Indicators related to organizational culture* ⁴	Sense that the personnel vision is implemented* ⁵	78.7%	81.9%	82.2%	
		Employee engagement	42.9%	45.2%	46.7%	
		Psychological safety	68.3%	69.4%	71.0%	
		Sense that working environments are comfortable	82.8%	84.3%	84.6%	
Personnel acquisition and growth (quantitative and qualitative)	No. of mid-career hires* ⁶		61	79	112	
	Turnover rate* ⁷		0.92%	1.64%	1.13%	
	Retention rate after 3 years (for new graduate hires)* ⁶		94.1% (those joining in FY 3/2021)	95.0% (those joining in FY 3/2022)	94.7% (those joining in FY 3/2023)	
	Training hours (per person)		16.4 hours	15.9 hours	21.4 hours	
	Training expenses (per person)		116,000 yen	119,000 yen	143,000 yen	
	No. of persons certified with advanced techniques/skills* ⁸		53	49	58	

*1 Includes executive officers in general manager posts.

*2 Note: Calculated based on the Act on Childcare Leave, Caregiver Leave, and Other Measures for the Welfare of Workers Caring for Children or Other Family Members, and in accordance with Article 71-4-1 of the enforcement regulations for that act. These figures do not include time taken off for the purpose of childcare.

*3 Hiring rate figures include those of our special subsidiary and associated companies that have received special subsidiary recognition.

*4 The column for FY 3/2023 shows the April 2023 survey results, the one for FY 3/2024 shows the April 2024 results, and FY 3/2025 shows the April 2025 results.

*5 We have shared our understanding of the kind of human resources called for in these changing times through our personnel vision.

*6 Excluding hospital medical staff.

*7 Figures include those who left during that fiscal year for personal reasons, those who were enrolled at the start of the fiscal year; excludes hospital medical staff.

*8 Figures are the combined total for Chugoku Electric and Chugoku Electric Power Transmission & Distribution.

Financial/Non-financial (ESG) Data

■ Personnel Continued

Personnel Management Indicators

	FY 3/2023	FY 3/2024	FY 3/2025	
Respect for human rights <small>Note: Figures for Chugoku Electric</small>				
No. of participants in workplace human rights training	3,872	3,846	3,859	
Uptake rate for workplace human rights training	99.8%	100%	100%	
Total no. of participants in human rights training sessions	4,783	4,771	4,726	
Promotion of safety and health <small>Note: Figures for Chugoku Electric</small>				
Accident frequency rate*1,2	0.00	1.00	0.29	
Fatalities/loss of work days	Employees*2,3	0 cases	7 cases	2 cases
	Contractors	4 cases	9 cases	9 cases
Occupational fatalities	Employees*3	0 cases	0 cases	0 cases
	Contractors	0 cases	1 case	0 cases
Electrocution/fall cases	Employees*3	0 cases	0 cases	0 cases
	Contractors	0 cases	2 cases	1 case
Traffic accidents (injuries) during commuting	4 cases	1 case	1 case	
Rate of absenteeism*2	0.95%	1.14%	1.09%	
Rate of presenteeism*4	1.57%	1.28%	1.28%	
Proportion requiring additional checks	87.0%	86.1%	86.2%	
Complete examination uptake ratio	61.8%	62.8%	64.0%	
Proportion requiring medical treatment	52.4%	43.3%	43.1%	
Stress check uptake rate	89.3%	93.5%	91.1%	
Proportion of individuals experiencing high levels of stress	6.6%	6.8%	6.9%	
Overall health risk*5	73.5	74.2	73.9	
Labor union membership	82.8%	82.6%	82.5%	

■ Stakeholder Engagement

	FY 3/2023	FY 3/2024	FY 3/2025	
Regional contributions <small>Note: Figures are the combined total for Chugoku Electric and Chugoku Electric Power Transmission & Distribution.</small>				
Social contribution activities	No. of activities	1,492	1,710	1,365
	Total no. of employees participating	6,957	7,137	7,005
Support for technical research in the region*6	26 cases (¥21.93 million)	31 cases (¥23.80 million)	27 cases (¥25.30 million)	
Support to promote culture and sports in the region*7	208 cases (¥30.95 million)	221 cases (¥27.92 million)	226 cases (¥28.60 million)	
Customer feedback reflected in business operations	-	27 cases	38 cases	

*1 Excludes accidents with no loss of work days.

*2 Excluding occupational accidents resulting from COVID-19 infections.

*3 Accidents in the course of work.

*4 Rate of employees requiring instruction to go home because their ability to work is limited due to ill health.

*5 Risk indicator for health issues, based on the concept of workplaces in a country where the average life expectancy could be 100 (scores less than 100 are considered positive).

*6 Subsidies from the Electric Technology Research Foundation of Chugoku.

*7 Subsidies from the Energia Culture and Sports Foundation.

Financial/Non-financial (ESG) Data

■ Governance

	FY 3/2023	FY 3/2024	FY 3/2025
Corporate governance <small>Note: Figures are for Chugoku Electric.</small>			
No. of directors	12 ^{*1}	13 ^{*2}	13 ^{*3}
Female directors	2 ^{*1}	3 ^{*2}	4 ^{*3}
External directors	5 ^{*1}	5 ^{*2}	6 ^{*3}
Independent directors	5 ^{*1}	5 ^{*2}	6 ^{*3}
No. of meetings of the Board of Directors	16	15	15
Attendance rate of all directors	100%	100%	99%
Attendance rate of external directors	100%	100%	99%
Total compensation for directors (except Audit and Supervisory Committee directors and external directors)	¥262 million (paid to 8 directors) ^{*4}	¥277 million (paid to 8 directors) ^{*5}	¥427 million (paid to 7 directors) ^{*6}
Total compensation for Audit and Supervisory Committee directors (except external directors)	¥33 million (paid to 1 director)	¥33 million (paid to 1 director)	¥36 million (paid to 2 directors) ^{*7}
Total compensation for external directors	¥45 million (paid to 5 directors) ^{*4}	¥55 million (paid to 5 directors)	¥60 million (paid to 6 directors) ^{*7}
Compliance <small>Note: "Number of reports to the Whistleblowing Hotline" is for Chugoku Electric, while the "No. of serious compliance violations" is for Chugoku Electric and Chugoku Electric Power Transmission & Distribution.</small>			
No. of reports to the Whistleblowing Hotline	48 cases	44 cases	32 cases
No. of serious compliance violations ^{*8}	5 cases	2 cases	2 cases
Information security <small>Note: Figures are the combined total for Chugoku Electric and Chugoku Electric Power Transmission & Distribution.</small>			
No. of serious information security incidents ^{*8*9}	0 cases	0 cases	0 cases
No. of serious personal information leakage incidents ^{*8}	4 cases	1 case	0 cases

*1 As of the end of June 2023.

*2 As of the end of June 2024.

*3 As of the end of June 2025.

*4 Includes directors who retired as of the close of the 98th annual General Meeting of Shareholders held on June 28, 2022.

*5 Includes directors who retired as of the close of the 99th annual General Meeting of Shareholders held on June 28, 2023.

*6 Due to the introduction of a performance-linked, stock-based remuneration system, this includes expenses for points awarded to directors in FY 3/2025.

*7 Includes directors who retired as of the close of the 100th annual General Meeting of Shareholders held on June 26, 2024.

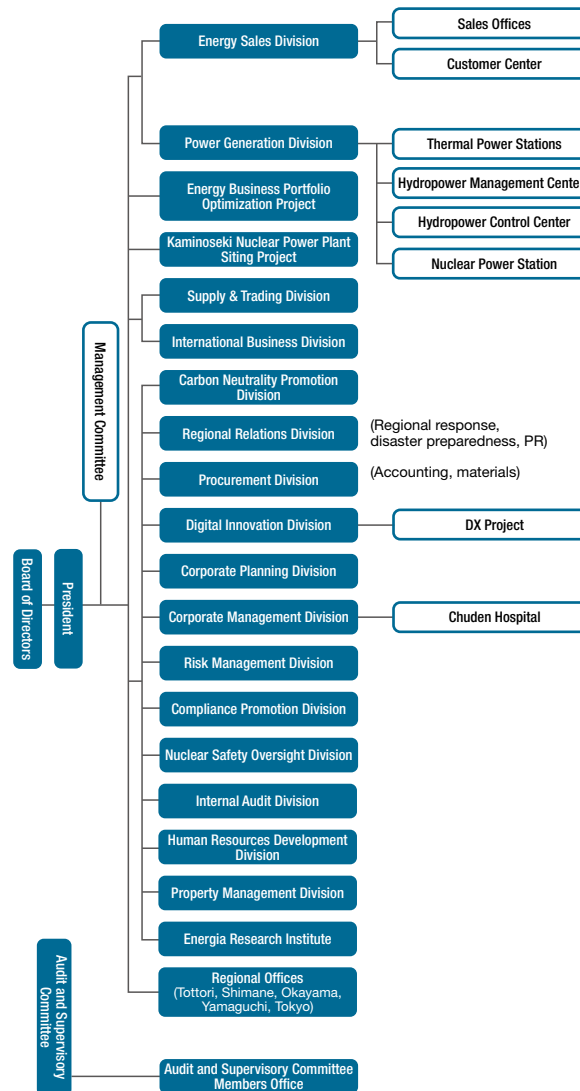
*8 Cases where a press release was issued.

*9 Refers to no. of incidents involving electronic information.

Corporate Data (as of April 1, 2025)

Corporate name	The Chugoku Electric Power Company, Incorporated
Head office	4-33 Komachi, Naka-ku, Hiroshima-shi, Hiroshima 730-8701 Japan
Representatives	Ashitani Shigeru, Representative Director, Chairperson of the Board Nakagawa Kengo, Representative Director, President & Chief Executive Officer
Date of establishment	May 1, 1951
Paid-in capital	¥197,024 million

Organization Chart (as of June 26, 2025)



Group Companies (as of March 31, 2025) (consolidated subsidiaries and affiliated companies accounted for by the equity method)

- ⊙ Consolidated subsidiaries (20 companies)
- Unconsolidated subsidiaries accounted for by the equity method (5 companies)
- Affiliated companies accounted for by the equity method (13 companies)

Comprehensive Energy Business

- ⊙ Energia Solution & Service Company, Incorporated
- ⊙ Chugoku Electric Power Australia Resources Pty.Ltd.
- ⊙ Chugoku Electric Power International Netherlands B.V.
- ⊙ ENERGIA POWER YAMAGUCHI CORPORATION
- ⊙ Chugoku Electric Power America, LLC
- ⊙ Chugoku Electric Power Singapore Pte. Ltd.
- Sevens Pacific Pte. Ltd.
- Setouchi Joint Thermal Power Co., LTD.
- MIZUSHIMA LNG COMPANY, LIMITED
- KAITA BIOMASS POWER CO., LTD.
- 3B Power Sdn.Bhd.
- Dakpsi Investment and Develop Hydroelectric Joint Stock Company
- Energy Fiji Limited ○ Jimah East Power Sdn.Bhd.
- Vung Ang II Thermal Power LLC
- Toyo Thai Power Myanmar Co., Ltd.

Power Transmission and Distribution Business

- ⊙ Chugoku Electric Power Transmission & Distribution Company, Incorporated
- ⊙ Denryoku Support Chugoku Co., Inc.

Information and Telecommunications Business

- ⊙ Enecom, Inc.

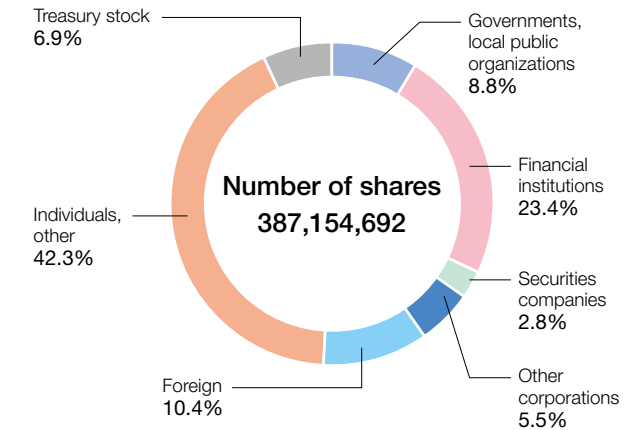
Other

- ⊙ CHUDEN KOGYO CO., LTD. ⊙ CHUDEN PLANT CO., LTD.
- ⊙ CHUGOKU INSTRUMENTS CO., INC.
- ⊙ Energia L&B Partners Co., Inc.
- ⊙ CHUDEN KANKYO TECHNOS CO., LTD.
- ⊙ EnerGia Business Service Co., Inc.
- ⊙ Power Engineering and Training Services, Incorporated
- ⊙ ADPLEX Co., Ltd. ⊙ CHUDEN ENGINEERING CONSULTANTS CO., LTD.
- ⊙ The Energia Logistics Co., Inc.
- ⊙ CHUGOKU KOATSU CONCRETE INDUSTRIES CO., LTD.
- EnerGia Smile CO., INC.
- NichiDenKogyo Co., LTD. ■ CHUGOKU BEND CO., LTD.
- Chugoku Record Management Inc.
- CHUGOKU HEALTH AND WELFARE CLUB CO., INC.
- Osaki CoolGen Corporation ○ CHUDENKO CORPORATION
- The Chugoku Electric Manufacturing Company, Incorporated

Stock Information (as of March 31, 2025)

Number of shares issued	387,154,692 shares
Number of shareholders	126,867
Accounting auditor	KPMG AZSA LLC
Listed financial instruments exchange	Tokyo Stock Exchange, Inc. (Prime Market)
Shareholder registry administrator	Sumitomo Mitsui Trust Bank, Limited 1-4-1 Marunouchi, Chiyoda-ku, Tokyo 100-8233

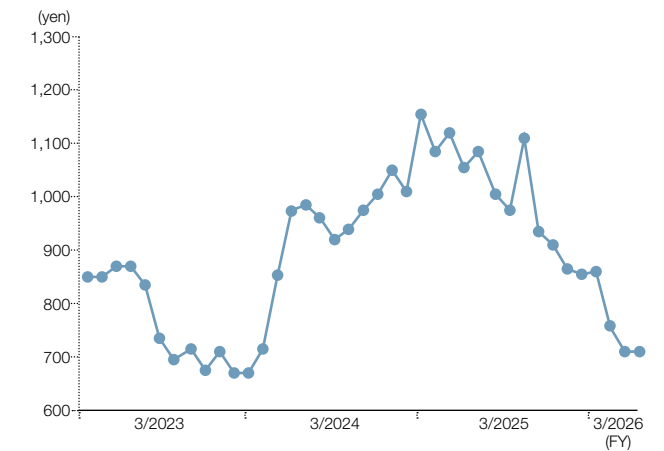
Composition of shareholders



Major shareholders (top 10)

Name	Number of shares held (thousands)	Shareholding (%) ^{*1}
The Master Trust Bank of Japan, Ltd. (trust account)	46,306	12.8
Yamaguchi Prefecture	34,005	9.4
Custody Bank of Japan, Ltd. (trust account)	16,173	4.5
Nippon Life Insurance Company	10,373	2.9
Chugoku Electric Power Employee Shareholding Association ^{*2}	7,024	1.9
The Hiroshima Bank, Ltd.	5,842	1.6
NORTHERN TRUST GLOBAL SERVICES SE, LUXEMBOURG RE LUDU RE: UCITS CLIENTS 15.315 PCT NON TREATY ACCOUNT	5,434	1.5
STATE STREET BANK WEST CLIENT - TREATY 505234	3,605	1.0
Ota Yoshiaki	3,262	0.9
STATE STREET BANK AND TRUST COMPANY 505001	2,931	0.8

Stock price



^{*1} Shareholding is calculated after deducting 26,661,131 shares of treasury stock from the total number of shares issued.

^{*2} The employee shareholding association of Chugoku Electric Power Company and Chugoku Electric Power Transmission & Distribution Company
Purpose and aims of the shareholding association: To help employees with asset formation

Scope: Employees of Chugoku Electric and Chugoku Electric Power Transmission & Distribution (with some exceptions)

Percentage of employees who are members: Approx. 76.7% as of March 31, 2025

Initiatives to raise the percentage of employees who are members: Monetary incentive system and regular membership awareness-raising activities